



# Model 630 & 632

# Function and Arbitrary Waveform Generator

The Model 630/632 Arbitrary Waveform Function Generator represents the finest single source for signal generation to date. Combining the latest DSP and DSS technologies, the Model 630/632 offers a number of operating modes, providing a versatile, cost-effective signal source. You will find the Model 630/632 is the best value and most capable instrument for any bench.



Arbitrary Waveform Function Generator, Sweep Function Generator, Pulse, VCO, AM, FM, Ø Modulation, FSK and Burst Modes are all accessed quickly and easily from the front panel keypad. The Model 630/632 has a user-defined waveform capability that eliminates the phase shifts, added data points and dropped data points. In traditional designs, data points are either repeated or dropped when the number of data points and the desired output frequency do not match exactly with the internal timing. In addition, the dropped or repeated data points are not necessarily the same ones each time the arbitrary waveform is constructed. In the traditional designs, the sampling of data points results in phase shifts when the sampling clock rate and the total points in the waveform are not exactly matched. The Model 630/632 is a "true arb" with fully synchronized outputs.

- ▼ No phase jitter or dropped points
- ▼ Recreate "real-world" signals
- ▼ More standard waveforms
- ▼ Simulates normal and aberrant situations
- ▼ More operating modes
- ▼ "The best of both worlds"- EDN

The Model 630/632 represents a major breakthrough in signal generation and analysis. This versatile instrument has capabilities that allow the engineer to use it in a broad range of applications that include communications, radio, telephony, analog/digital circuit design and test.

The Model 630/632 is much more than a signal generator. Never before has so much versatility, capability and performance been packed into a single low-cost instrument. Its architecture is based on the latest advances in DSP and DDS technology which not only ensures calibrated and drift-free performance, but also gives the engineer signal analysis functions such as DTMF Detection and Power Level Measurement. The capabilities of the Model 630/632 can continually be enhanced and expanded by downloading software upgrades to internal Flash memory.

The Model 630/632 delivers clean, fully synthesized, DC to 21.5 MHz/31.5 MHz modulated or unmodulated waveforms with 0.01Hz frequency resolution. User-friendly features include a large, easy-to-read illuminated LCD display which allows the user to see all modulation parameters simultaneously and a full numeric keypad and encoder which provide direct editing of each parameter. No confusing submenus!

**Arbitrary Waveform Function Generator** The Arbitrary Waveform Function Generator allows you to design custom waveforms on your personal computer and download them to the Model 630/632 which generates them in real-time. The Arbitrary Waveform Generator system is also used to generate pulse waveforms with an adjustable duty cycle and a suite of pre-stored Function Generator waveforms. Arbitrary waveforms may either be designed with a graphical Windows®-based design tool or be generated point-by-point in a variety of data formats from your own application software. A floppy diskette with a data generator program, example waveforms, and a downloader utility are included with this option.

**Arbitrary Waveform Generation** Design custom waveforms on your PC and download for generation 40 MS/s max update rate 12 bit resolution, 32K buffer. Arbitrary waveforms may be designed with a graphical Windows®-based design tool, which is available for free download from [www.bkprecision.com](http://www.bkprecision.com).

**Function Generator** Generate Triangle, Ramp, Sinewave and others.

**Pulse Generator** Digital waveforms with an adjustable duty cycle.

**High Stability Timebase** Guarantee ±5 ppm frequency over 32° to 104°F (0 to 40°C) range.

### Modes

Basic Sine/Square Wave

Linear/Log Sweep (Free Run or Triggered)

Internal/ External AM

Internal/ External FM

Internal/ External PM

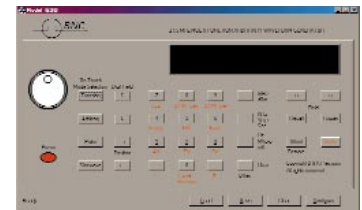
Internal/ External BPSK

Internal/ External FSK (Ext FSK to 3MHz)

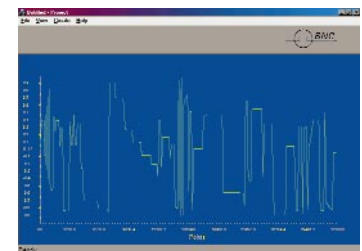
Burst (Int/Ext trigger)

Internal/ External SSB

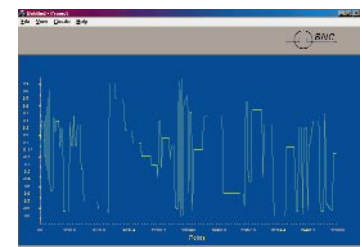
DTMF Detection



Control Panel



Freehand Waveform



Amplitude Modulation Waveform

Specifications subject to change without notice

Duncan Instruments Canada Ltd BNC

121 Milvan Drive, Toronto, ON, Canada Tel: 416-742-4448 - Fax: 416-749-5053

Website: [www.duncaninstr.com](http://www.duncaninstr.com)

