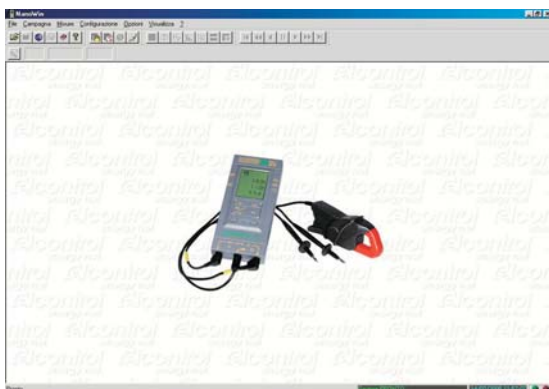


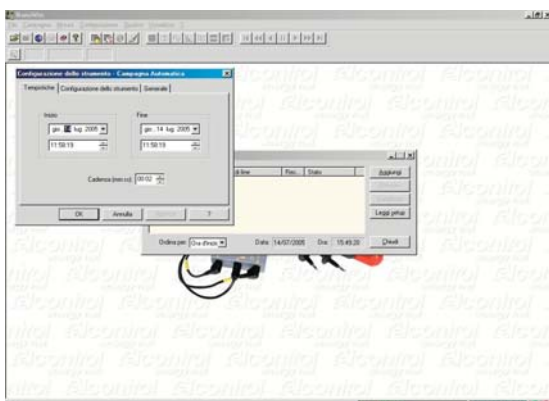
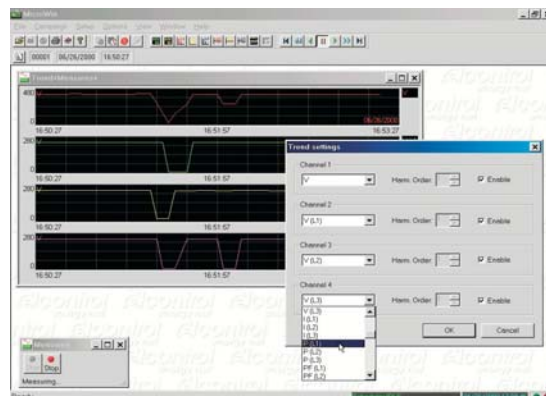
# NANOWIN

Data management software for Windows 9x, NT, 2000 and XP  
for hand-held analysers NANOVIP Plus and NANOVIP Plus MEM

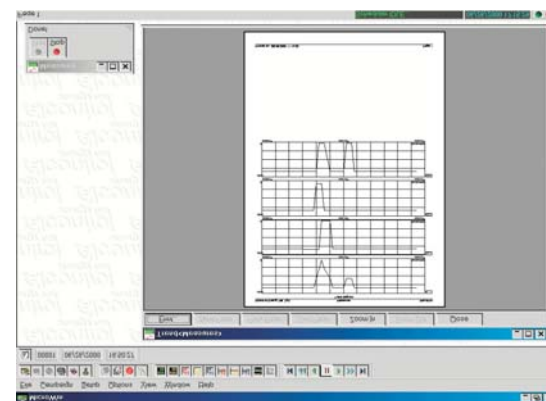


Harmonic Spectrum display. The Voltage, Current and CosPhi of each harmonic (0-24) are displayed both as a numerical value and as a percentage with respect to the basic one.

NanoWin is a Windows 9x, NT4.0, 2000, XP data visualization, management and processing software for Nanovip Plus and Nanovip Plus Men instruments. It allows visualization of all measurements on the instruments and performing measuring surveys in both Manual and Automatic (scheduled) modes. Measurement trends over time, waveforms, voltage and current harmonics spectrum etc. can be displayed.



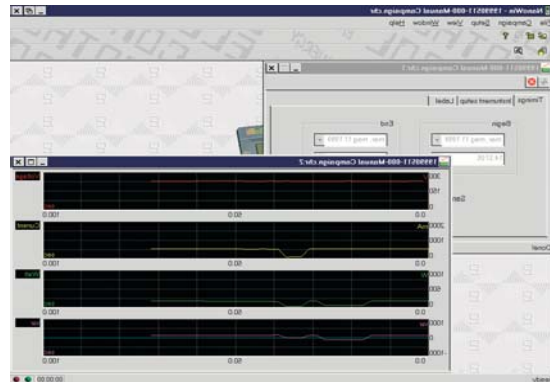
Configuration of surveys is very straightforward. A single configuration window allows the main parameters to be set, e.g. campaign beginning and end date and time, frequency time, instrument set-up and label describing each measuring campaign.



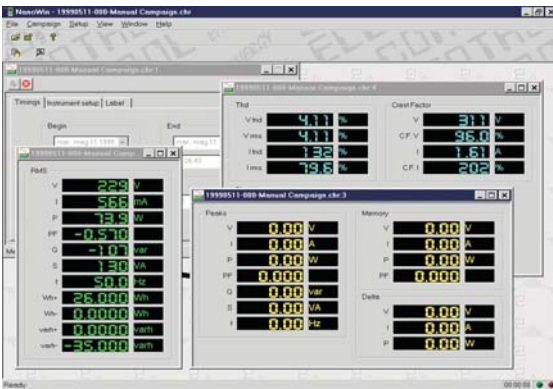
During a campaign, it is possible to display the real-time trend of up to measurement parameters.



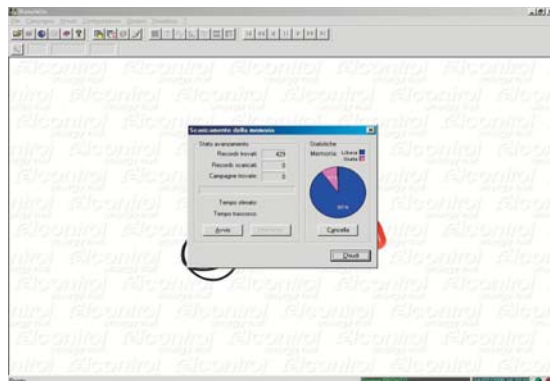
Instrument set-up Window



It is also possible to carry out waveform campaigns, by displaying the voltage and current measured by the instrument in the Graphic mode.



The digital format measurement display is divided according to four types of data: RMS, Peaks-Memory-Sweep, Thd-Crest Factor-Ripple and Harmonics Spectrum. Each one of the listed windows can be displayed or hidden independently.



When Nanowin is used with NANOVIP *Plus* MEM, the program enables to download, classify and file measuring campaigns' data stored in the instrument's internal memory. Such campaigns are handled just like numerical campaigns executed on PC by the NanoWin program in the remote mode.